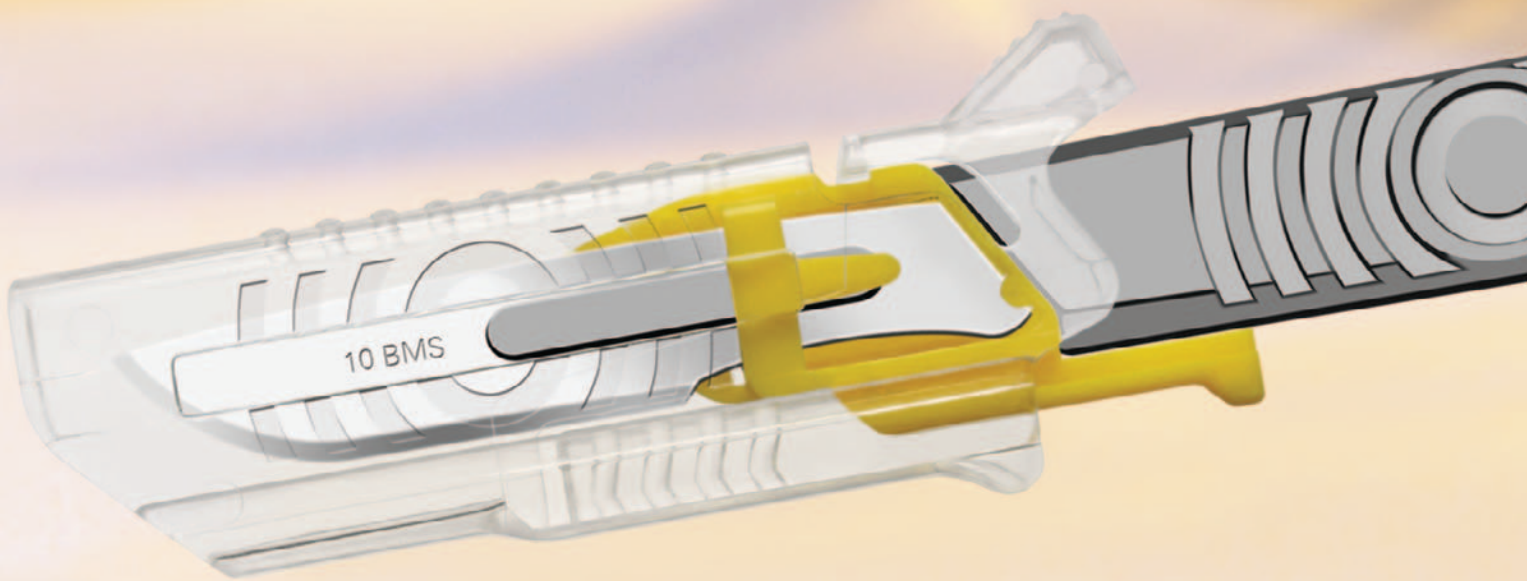


Safe, **KLEEN**
and easy to
use



The all-in-one Blade
Management System by
Swann-Morton[®]

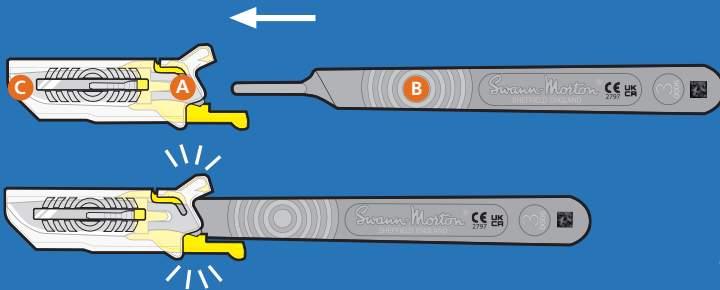
The KLEEN Blade Management System (BMS) compliments the existing range of safety products available from Swann-Morton in their efforts to support safe passing protocols and sharps injury reduction amongst Health Care Professionals.

The system which incorporates a quality Swann-Morton surgical blade is designed to operate with most No. 3 and No. 4 standard fitment surgical handles already in circulation within the hospital system thus minimising disruption and cost during the conversion process.

The system comprises of two injection moulded parts which encapsulates a standard fitment surgical blade and protects surgical staff from sustaining a potential sharps injury whilst attaching or removing the surgical blade from a handle.

Attaching the BMS

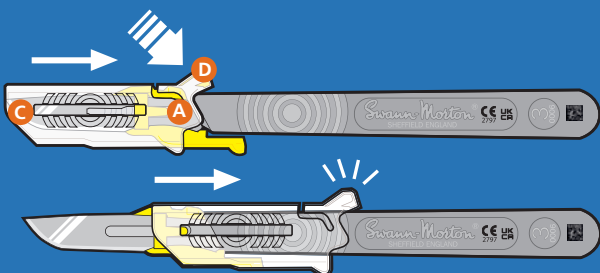
1 The BMS system is attached to the handle **B** by inserting the handle into the rear of the sheath **A** and engaging with the slot in the blade **C** as is current normal practice. As with all standard blades and handles, a certain amount of care must be taken to ensure the fitment is correctly located; in this case however the user is completely protected from the cutting edge of the blade during the process.



2 An audible 'click' will be heard when the blade is correctly attached. The fitment should also be checked visually prior to use.

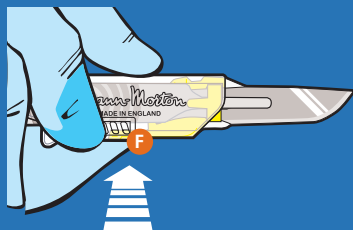
Exposing the blade

3 To reveal blade **C**, sheath **A** can be retracted by applying downward pressure directly to the top of retaining catch **D** enabling the sheath to slide backwards. To prevent unintended retraction during assembly, releasing retaining catch **D** for the first time will require greater force than for subsequent retractions.



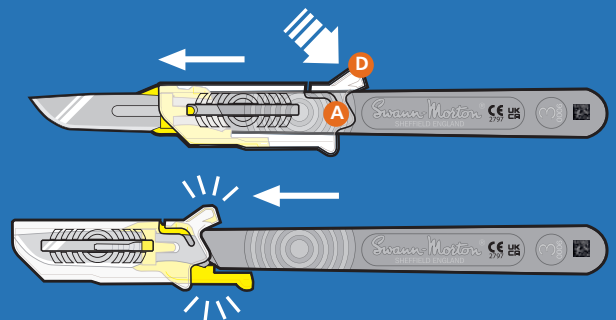
4 A further audible 'click' will provide confirmation that the sheath **A** is fully retracted.

5 In this open position surgery can now be performed in the normal manner. However during procedures where the surgeon needs to apply a little more longitudinal pressure than usual, for example when making a stab incision, the sheath can be firmly locked open by pressing lightly on the tab **F** in lower side area of the sheath.



Closing the sheath and covering the blade

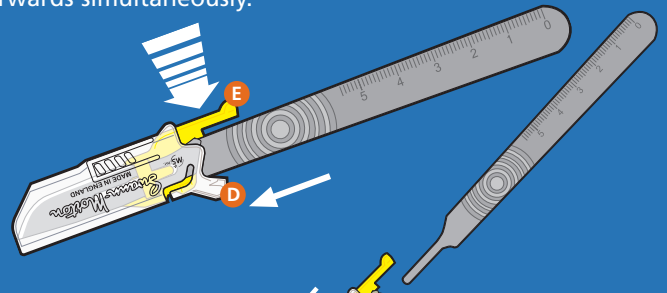
6 To safely cover the blade, the sheath **A** can be returned to the closed position by releasing the retaining catch **D** and sliding the sheath forwards.



7 As before an audible 'click' will provide confirmation that the sheath is fully closed. This can be repeated throughout the procedure to ensure safe passing of the scalpel between members of the surgical team.

Detaching the BMS

8 Once the sheath is closed and on conclusion of the procedure the BMS may be safely removed from the scalpel handle. Hold scalpel in right hand with blade pointing downwards and away from your body and with the sharp edge facing to the right. With thumb on retaining catch **D** and forefinger on blade-removing lever **E**, push down and forwards simultaneously.



Sharps disposal

9 Using firm pressure the BMS will be removed from the handle by sliding it away and can be safely disposed of, in an appropriate sharps container.



A step forward in the evolution of safe scalpel use.

- The BMS allows for the effortless and safe attachment of standard fitment surgical blades
- Features a protective sliding sheath which covers the surgical blade completely, assisting accident free handling
- Sheath fully exposes the surgical blade when in use with intuitive lock which prevents any forward movement of the sheath during procedures
- Easy to detach BMS which contains the blade for safe disposal

KLEEN BMS - Sterile

Individually sealed in a paper film pack, sterilised and boxed in units of 50

Product	Product No	Unit
Fits No. 3 handle		
10	5701	} Boxed in 50's
11	5703	
15	5705	
11P	5791	
15T	5792	

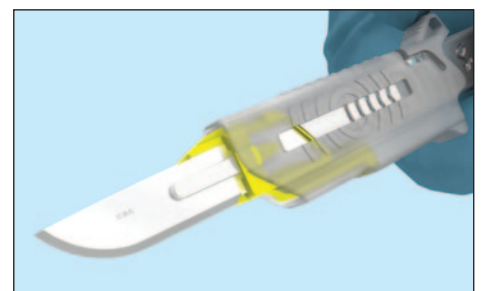
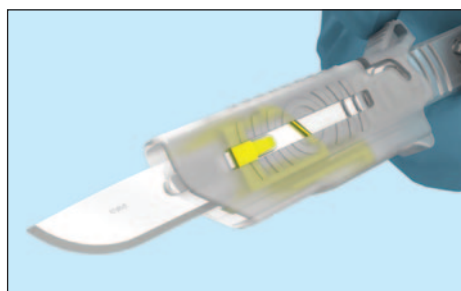
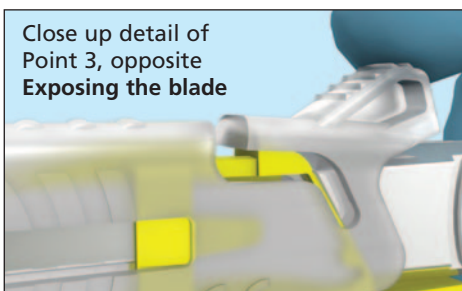
Product	Product No	Unit
Fits No. 4 handle		
20	5706	} Boxed in 50's
21	5707	
22	5708	
23	5710	
24	5711	

KLEEN BMS - Bulk Non Sterile

10 bags of 50 per outer box of 500

Product	Product No	Unit
Fits No. 3 handle		
10	5601	} Boxed in 500's
11	5603	
15	5605	
11P	5691	
15T	5692	

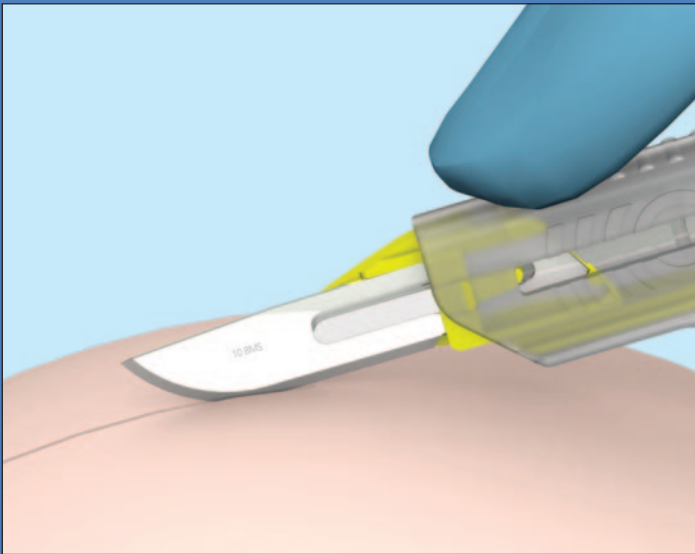
Product	Product No	Unit
Fits No. 4 handle		
20	5606	} Boxed in 500's
21	5607	
22	5608	
23	5610	
24	5611	



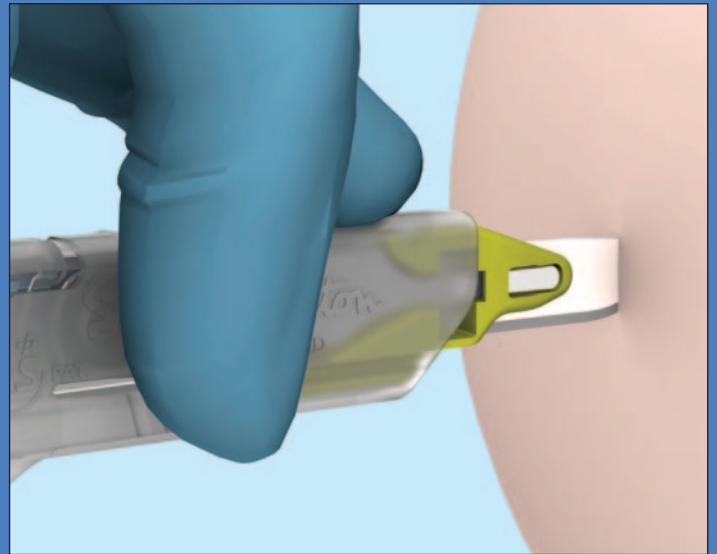
SAFE Features a protective sliding sheath which covers the surgical blade completely, assisting accident free handling

KLEEN Sheath fully exposes the surgical blade when in use with intuitive lock which prevents any forward movement of the sheath during procedures

EASY Easy to detach BMS which contains the blade for safe disposal



The BMS used to perform surgery in the normal manner.



Sheath locks firmly in place to allow stab incisions.



2797



All medical devices comply with the Medical Device Directive, 90/269/EEC as amended by Part 2 of The Medical Devices Regulations 2002, Annex 2, excluding section 4 as modified by Part 2 of Schedule 2A to The Medical Devices Regulations 2002.



EMS 633531



ENMS 633525



FM 73368



Scan this code for more product information

Swann-Morton and the 'ring pattern' logo are registered trademarks of Swann-Morton Limited and related companies. The products shown are manufactured for use by trained health care professionals and can cause injury if used or handled incorrectly. The information and illustrations used in connection with the products shown on this leaflet are for general guidance only and users must seek proper training and instruction in their use before using or handling such products. Swann-Morton Limited exclude all liability for injury to the extent permitted by law.

Swann-Morton[®]
SHEFFIELD ENGLAND

Swann-Morton Ltd. Penn Works, Owlerton Green, Sheffield S6 2BJ
Telephone: +44 (0)114 2344231 Email: info@swann-morton.com
www.swann-morton.com