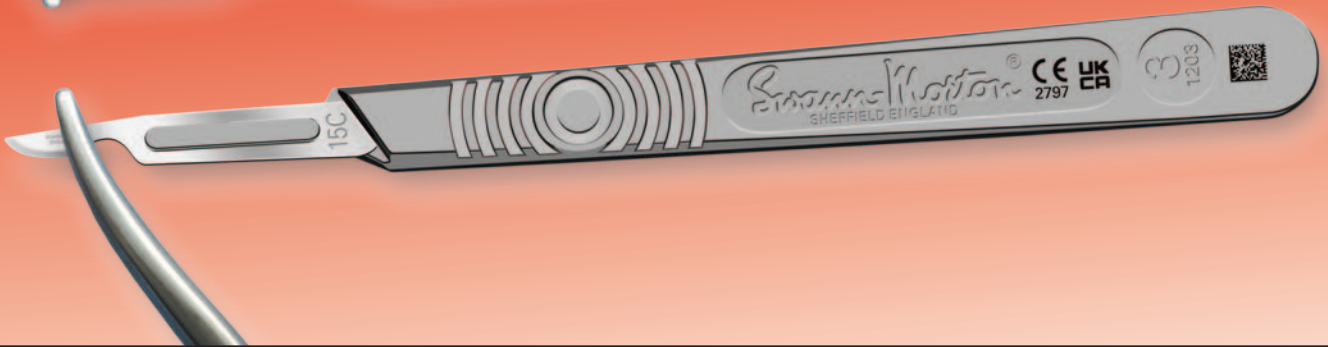
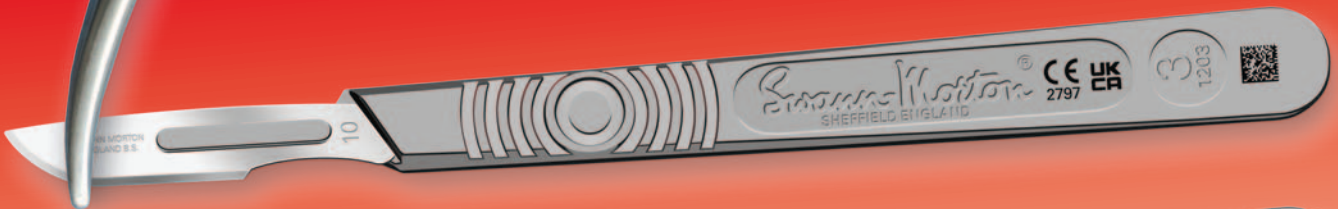




There's a right way



and a wrong way to fit a surgical blade



Don't destroy a perfect cutting edge

Blades should never be fitted to handles with damaged or worn fitments



SAFE HANDLING - PROCEDURES

Safe Handling of Swann-Morton Blades

The way in which a surgical blade is handled prior to use can determine how effectively it performs during use.

There are a number of ways that the cutting edge of a blade can become damaged once removed from its protective foil packet.

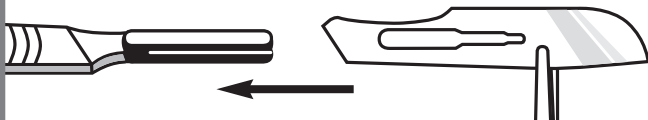
When removing a blade from the protective packet make sure it is not dropped into a metal bowl or container as this can reduce the initial keenness of the cutting edge even before it is fitted to the handle.

If you have to use forceps or needle holders to remove the blade from its protective packet ensure that you do not grip the blade across the cutting edge.

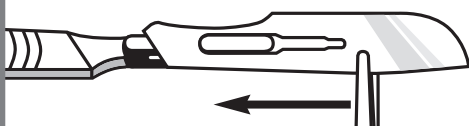
Attaching a surgical blade

Use the following procedure to **attach** a surgical blade:

- 1 Grip blade with forceps, or similar, avoiding contact with cutting edge.
- 2 Hold handle in left hand with bayonet fitting uppermost.



- 3 Place blade partway over handle fitting and engage slots.
- 4 Slide blade until it clicks into position.



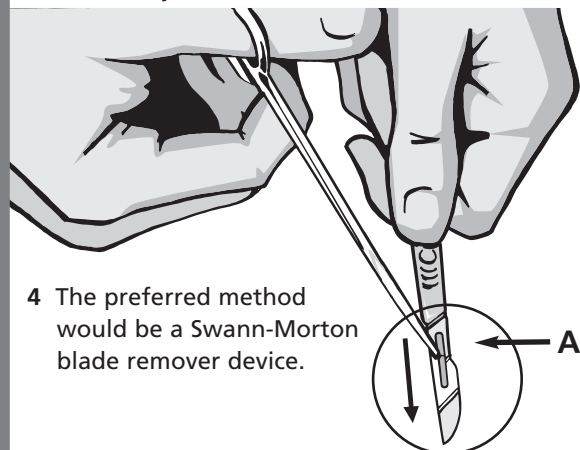
- 5 To improve assembly, flex blade slightly upwards when sliding onto the handle.



Removing a surgical blade

Use the following procedure to **detach** a surgical blade:

- 1 Grip the blade with forceps or needle holders at point A making sure that the cutting edge is facing away from the hand and body.
- 2 Ensure the blade is pointing downwards and towards the trolley and NOT towards another member of your team.
- 3 Whilst holding the handle firmly lift the back edge of the blade with the forceps or needle holders and slide away the handle.



- 4 The preferred method would be a Swann-Morton blade remover device.

DON'T DESTROY A PERFECT CUTTING EDGE

Blades should never be fitted to handles with damaged or worn fitments

Swann-Morton and the 'ring pattern' logo are registered trademarks of Swann-Morton Limited and related companies. The products shown are manufactured for use by trained health care professionals and can cause injury if used or handled incorrectly. The information and illustrations used in connection with the products shown on this leaflet are for general guidance only and users must seek proper training and instruction in their use before using or handling such products. Swann-Morton Limited exclude all liability for injury to the extent permitted by law.